

# BNC Conn. Series



## Material & Finish

Body: Zinc Alloy Nickel Plating

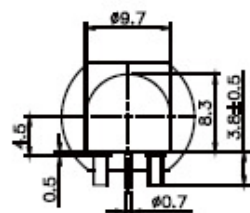
InSulator: TEFLON

Center Contact : Phosphor Bronze , Gold Plating

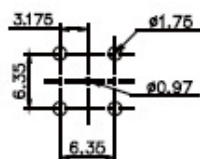
Mounting Post: Phosphor Bronze / Tin Plating

BNCR003-F  GW  -L

5:50 Ω 7:75 Ω   1: With Accessiores  
2: W/O Accessiores



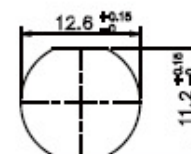
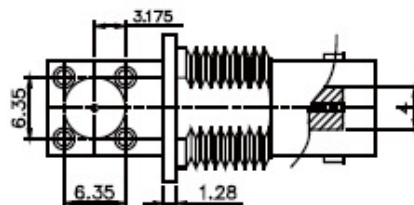
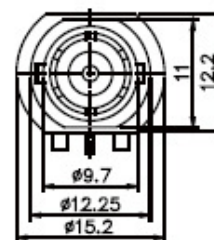
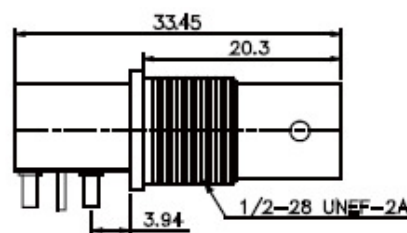
1/2-28UNEF-2B  
CLAMP NUT



RECOMMENDED PC BOARD LAYOUT  
WITHOUT MOUNTING POSTS



LOCK WASHER



RECOMMENDED MOUNTING HOLE  
MAXIMUM PANEL THICKNESS: 6.6MM

**TOPTEK**  
HARDWARE ELECTRONIC COMPONENTS



www.toptek-co.com